

new
stingray



MOVING FAMILIES



R82[®] 

Danish design
Innovation
Quality



Explore the new Stingray



10 Responsible, hygienic & safe fabric



6 Unique swivel action



4 Going outside?



Colour up your life



Go out together!

Living an active family life demands the right equipment. The new Stingray is a superbly stylish buggy with tool free adjustment of postural support and unique swivel action for forward/rearward facing options.

The carbon frame with its trendsetting design encourages every family to go out together. The new Stingray is in a league of its own.

Adjustments, comfort and lightness of steering are keywords for this buggy. The new Stingray makes it possible to change from forward to rearward facing with its 180° turnable seat with the child seated. The child is always comfortably seated, whilst the various angle adjustments make it easy to find exactly the position they need.

The new Stingray makes it possible to bring your child out and about giving your child a lot of stimulation. Giving the child support around the pelvis creates a stable base and ensures a good sitting balance. It helps the child maintain the trunk and the head in midline. Good postural control will help the child to feel secure and enable the child to learn new motor skills.

Good looking and functional equipment giving specific support, exactly where it is needed.





Outdoor adventure?

The new Stingray makes it possible to bring your child out and about - giving your child a lot of stimulation. Children with disabilities are often very sensitive to the wind and sun. A purpose-made, adjustable folding top can be mounted to provide weather protection.

Pulling the folding top all the way down in front of the child. A window can be opened so the child will still be able to actively follow what is going on.



Folding top with many options



Cover for rainy adventures...



Cold outside?



Easy & safe transportation

The new Stingray is folded quickly and fits into almost any car. Fold the seat and frame units separately or together and pack them into your car -soon you will be on your way.

The new Stingray complies with ISO 7178-19, for safe transportation in vehicles. The new Stingray is

furthermore approved for transportation of 40 kg user weight in vehicles.

The accessories consist of a selection of things that help you on the go:



Shopping basket



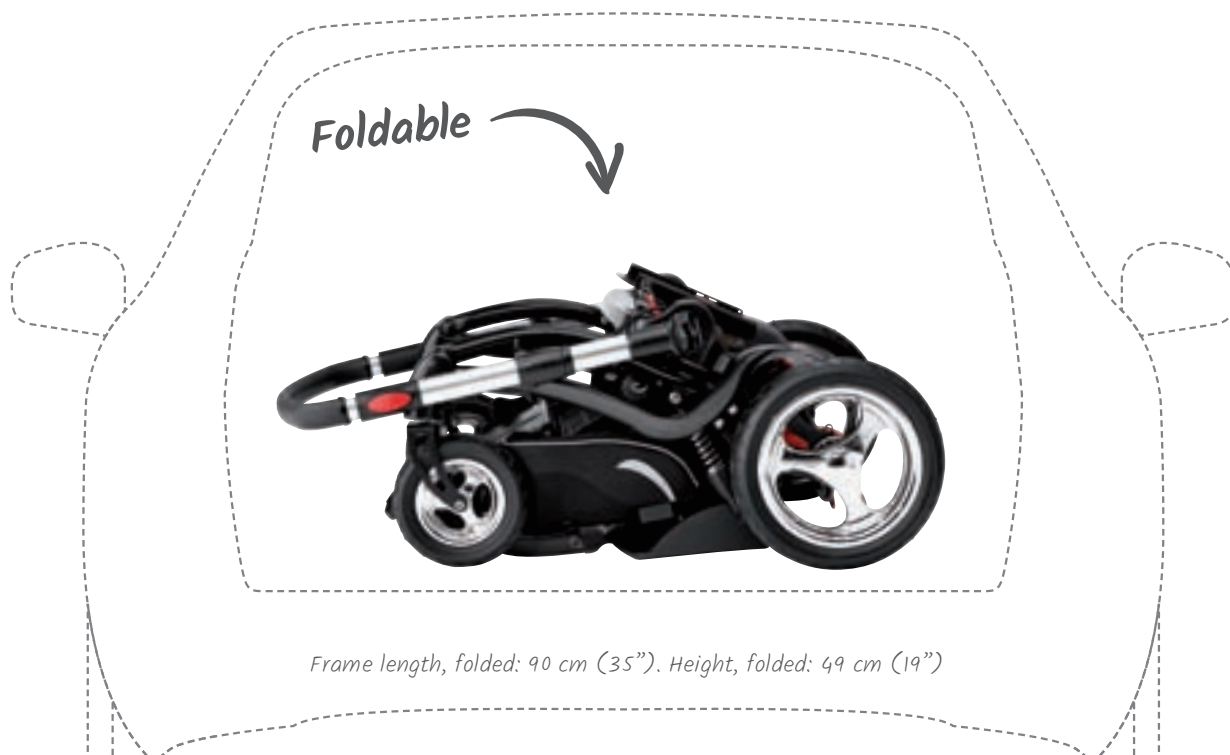
Transport fittings



Oxygen bottle holder



Vent tray





At eye level

Revolutionary function with a 180° turnable seat unit - even with the child seated. It is always important to be in contact with the child. Depending on the situation the child can either see the parent and communicate or follow the surroundings in the driving direction. No matter the wind and the sun the new Stingray offers a comfortable position which is easy to achieve through 180° turn even with the child in the seat.

*180° turnable seat unit
with the child seated*

Perfect seating position

It is important to change position. We are doing it all the time, but some children need help to correct their position and to make it possible for them get their muscles stretched. It is very easy to tilt the seat on the new Stingray.

*Very easy tilt in space
and back recline
adjustments*

TILT IN SPACE

Tilt in space maintains the angle in the hips and gives the child a chance to rest and relax. Children not having sufficient head control, will benefit from a little backward tilt. Changing tilt in space will also relieve the pressure on the buttock and spine, so sitting for a longer period of time will be comfortable with the help of various seating positions.



BACK RECLINE UP TO 170°

Back recline changes the angle in the hips. For some children with spasticity it will be preferable to keep a fixed angle over the hips to decrease the spastic element and only use the tilt in space, but for other children it is very relaxing to lay down flat. In this position the child can take a nap if needed.





Postural support and stability

It is important to ensure an optimum postural support for the individual needs. A little extra support by creating a stable base in the seating position gives the child the freedom to move. The new Stingray seat unit comes with foot support –

a minimum support to affect the position of the pelvis and in that way the abdominal muscles. The new Stingray comes with a range of accessories to create postural stability:



Head rest cushion



Head rest



Sculpted head support



Side supports



Hip supports



Vests & belts



Pommel



Grip handle



Trays

Take a closer look at all our accessories options on our website



Go ahead and grow!

Your child's motor skills are constantly evolving, and result in new skills, needs and autonomy. The new Stingray consists of a one size frame and the seat unit comes in two sizes. You can grow with your Stingray and just change the seat unit.

Footplate, seat and back supports provide the freedom of many seating positions, so the child can sit actively and varied and therefore develop in the best possible way



Stingray seat	Size 1	Size 2
Seat width	30 cm (11¾")	35 cm (13¾")
Seat width with hip supports	18 - 22 - 26 cm (7 - 8½ - 10¼")	23 - 27 - 31 cm (9 - 10½ - 12")
Seat depth	18 - 30 cm (7 - 11¾")	25 - 40 cm (9¾ - 15½")
Back height, shoulder	27 - 41 cm (10½ - 16")	36 - 51 cm (14 - 20")
Back height, total	41 - 51 cm (16 - 20")	50 - 65 cm (19½ - 25¼")
Length of foot rod	21 - 28 - 34 cm (8¼ - 11 - 13¼")	21 - 28 - 34 cm (8¼ - 11 - 13¼")

ONE SIZE FRAME



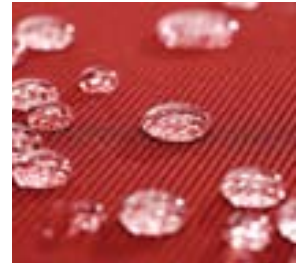
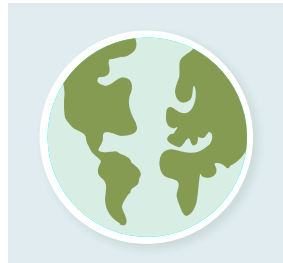


Responsible, hygienic & safe

With the purpose of contributing to the diminution of the exploitation of natural resources, we introduce a new fabric with a range of colours to the new Stingray which is made of 100% recycled material.

The cushions are made of comfortable double knitted stretch fabric for better positioning with a soft touch and appealing look.

Durable and elastic fabric to suit your active adventures. Furthermore the fabric is; flammability repellent, water repellent, oil repellent, antibacterial, washable and resistant to fading.





Colour up your life

Easy to change the cushion of the new Stingray and immediately change the look of your stylish buggy. Choose between 7 colours...





STINGRAY

Abreast of the future

R82 is a market leading supplier of healthcare equipment for disabled children with a well designed product range that includes seating, standing, walking, bathing and transportation. Solutions, tailored to the needs of the children, giving them the greatest possible freedom and new opportunities for movement.

nothing compares to a smile[☺]

*Share your R82
Stingray moments*

#R82stingray #nothingcomparestoasmile

